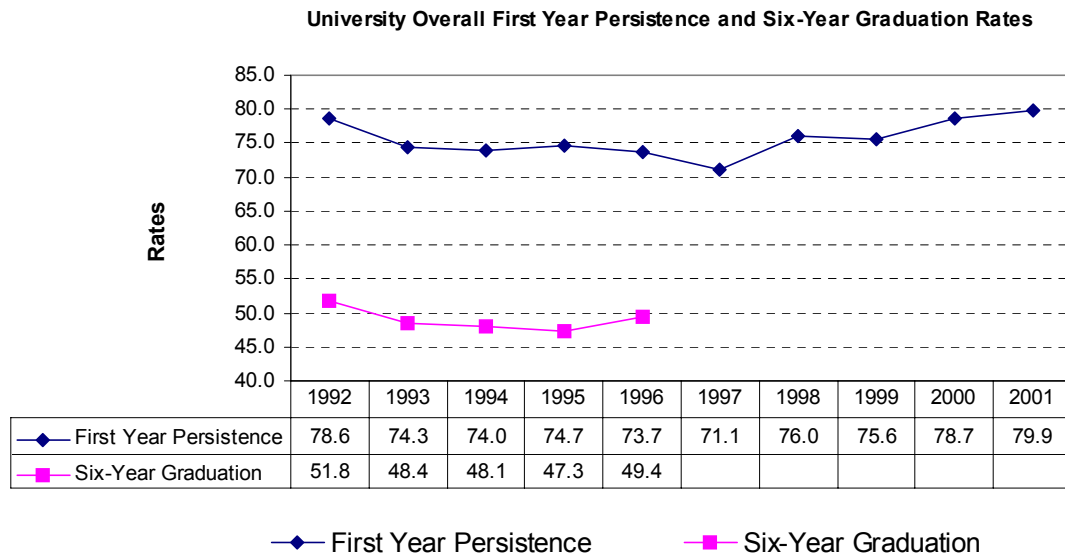


Summary Reports of First-time, Full-time, Baccalaureate Degree-Seeking Student Persistence and Graduation Rates

Fall 2002
IRR Report No. 1

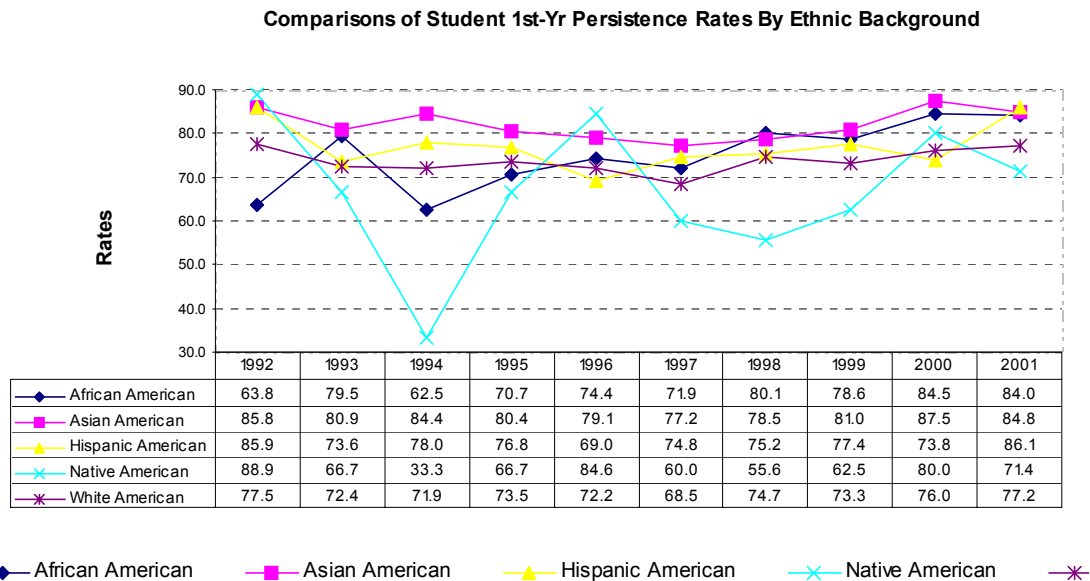
1. **Overall First-Year Persistence and Six-Year Graduation Rates:** As Figure 1 depicts, university overall first-year persistence rate for 2001 Cohort has reached the highest point in the past 10 years (79.9%). Six-year graduation rates for Cohort 1996 (49.4) saw a 2% increase over 1995.

Figure 1



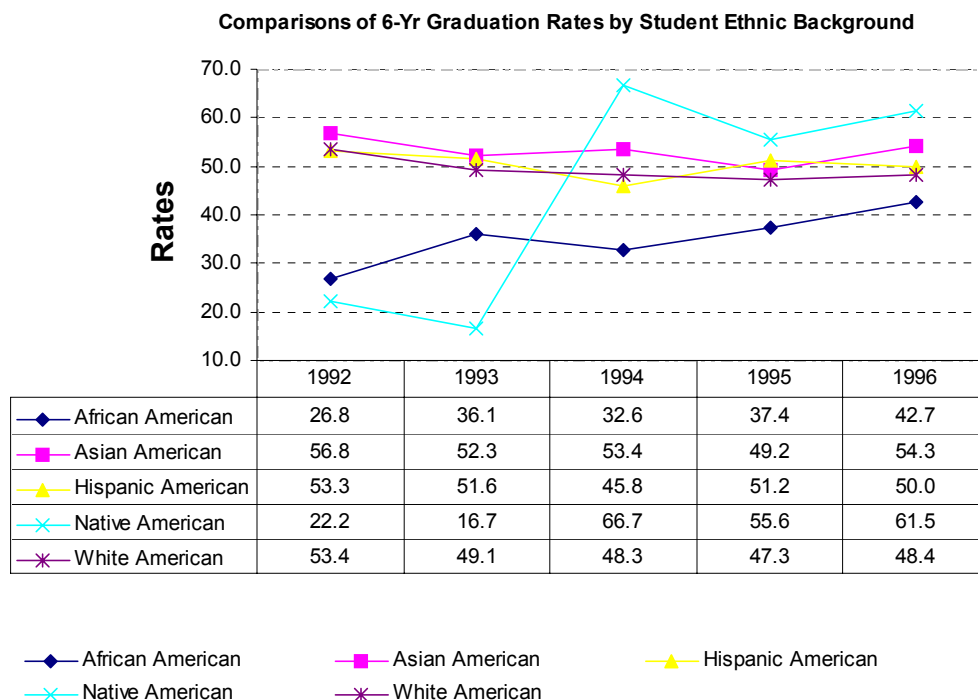
2. **First-Year Persistence Rates by Ethnic Background:** According to Figure 2, students from ethnic minority groups tend to have higher first-year persistence rates than their White peers. Taking Cohort 2001 for example: as of Fall 2002, the persistence rates were 84% for African American, 84.8% for Asian, 86.1% for Hispanic and 77.2% for the White Americans. Due to the exceptionally small number of students from the Native Americans, their persistence rates were not very stable. Therefore, they were excluded from any further comparisons.

Figure 2.



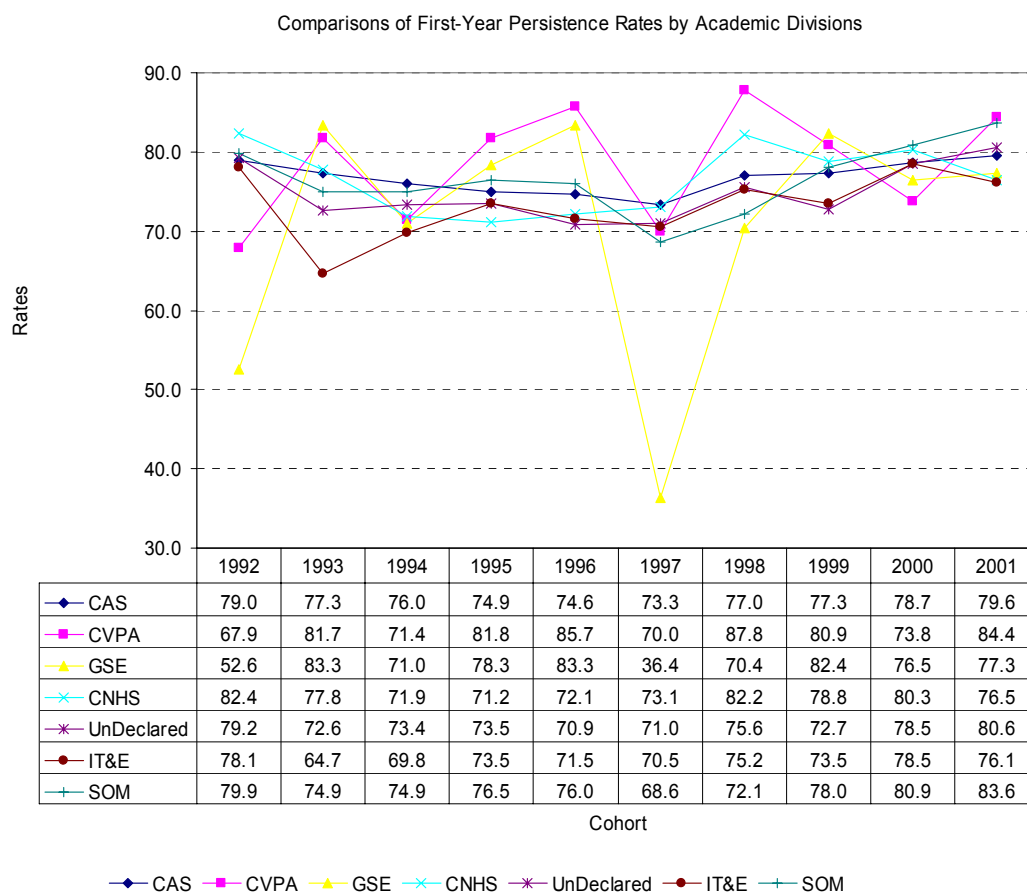
3. **Six-Year Graduation Rates by Student Ethnic Background:** Even though African American students tend to have higher first-year persistence rates than their White American peers, their six-year graduation rates have been consistently lower, as illustrated by Figure 3. However, in the past five years, African American students had the biggest graduation increase (from 26.8% for 1992 cohort to 42.7% for 1996 cohort), while students from other ethnic groups (apart from the Native Americans) experienced slight decrease in 6-year graduation rates.

Figure 3



4. **First-Year Persistence Rates by Academic Divisions:** Since some of the academic divisions (such as GSE and CVPA) have relatively small cohorts, their persistence rates tend to fluctuate drastically from year to year. However, the overall trend seemed to be that after some slight downward slope in the mid 90's, first year persistence rates started to go up steadily starting from 1998. Overall, College of Visual & Performing Arts, Graduate School of Education and School of Management saw their first-year persistence rates improved, College of Arts & Sciences remained steady, College of Nursing & Health Sciences and School of Information Technology & Engineering experienced some slight loss.

Figure 4



5. **Six-Year Graduation Rates by Academic Divisions:** According to Figure 4, Graduation rates for those students who did not declare majors went down almost 7% from 52.9% for the 1992 cohort to 46% for the 1996 cohort. Another division that saw graduation rate declining is ITE.

Figure 5

