

A Study of Academic Major Decisions by Undeclared Students 1992 - 2001

IRR Report

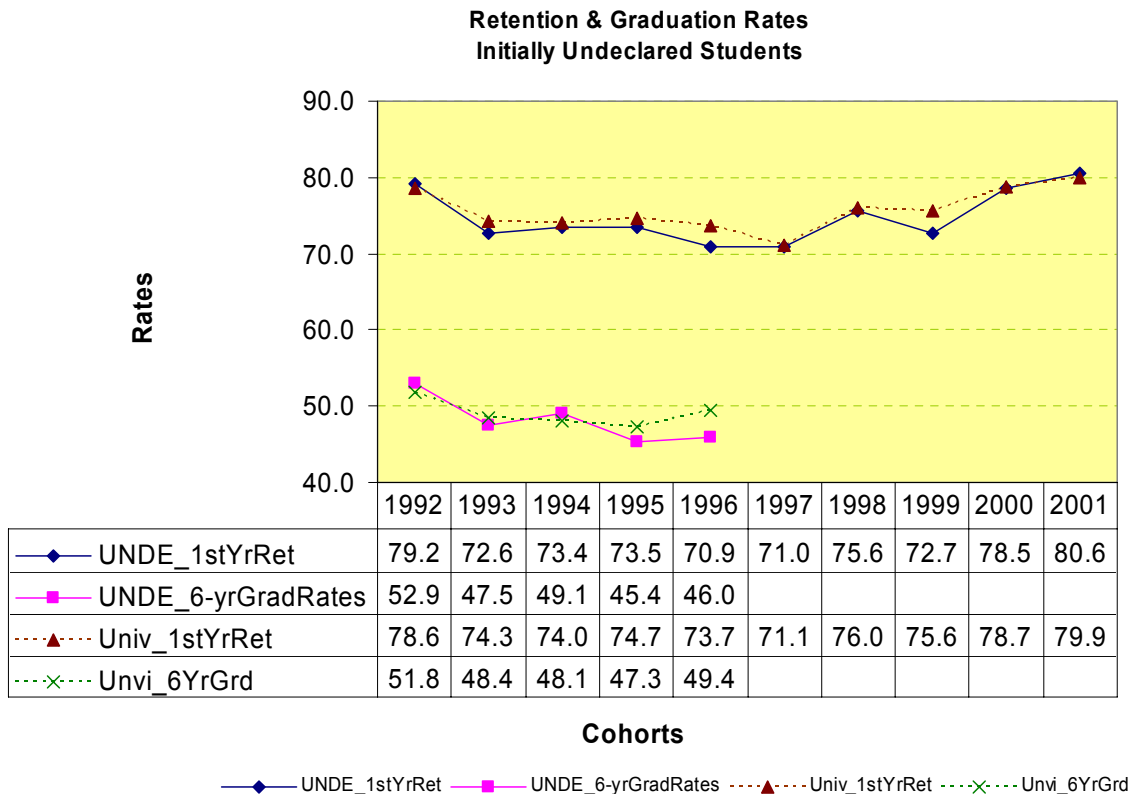
Spring 2003

Even though student retention rates have been tracked closely, there are still questions unanswered regarding Undeclared students (UNDE). For example: Which colleges did those Undeclared students go to after they had made their major decisions? When do the majority make their decisions and what are the most popular majors for those students? This report attempts to address those questions in order to better understand this group of students. Information for this report is based on the University's First-time, full-time, baccalaureate-degree seeking cohorts only.

I. UNDE Students in General

General persistence and graduation rates for UNDE students are presented in Figure 1, with the University's overall average as a comparison reference. Generally speaking, UNDE have similar persistence and graduation rates as their peers. It might be worth noticing that the six-year graduation rates for UNDE have been slightly lower for the 1995 and 1996 cohorts.

Figure 1. Comparisons of Persistence and Graduation Rates



II. Time When UNDE Students Declare Their Majors:

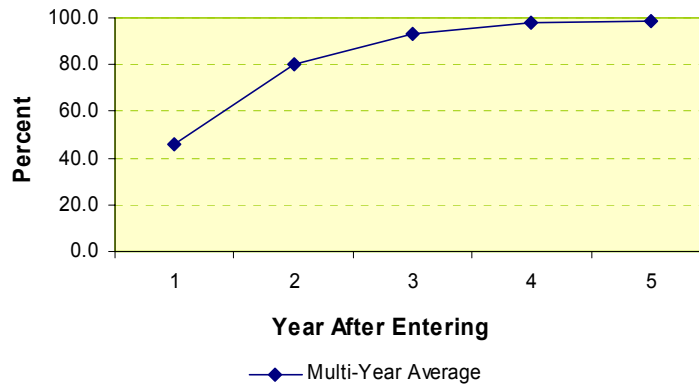
Timing for UNDE students to declare a major is depicted in Table 1. Figure 2 is a graphic representation of the timing when UNDE students declare their majors. As Figure 2 depicts, by the end of their second year on campus, about 80% of them would have chosen a major.

Table 1. Percent of UNDE Students Declare Their Majors

	Year After Entering									
	1		2		3		4		5	
	N	%	N	%	N	%	N	%	N	%
1992	256	44.7	466	81.3	540	94.2	563	98.3	566	98.8
1993	353	52.6	554	82.6	639	95.2	660	98.4	665	99.1
1994	339	49.1	555	80.3	654	94.6	679	98.3	688	99.6
1995	303	49.3	507	82.6	579	94.3	599	97.6	609	99.2
1996	312	50.7	505	82.1	565	91.9	592	96.3	604	98.2
1997	253	45.3	419	75.1	502	90	543	97.3	551	98.7
1998	275	44.4	482	77.9	573	92.6	602	97.3	-	-
1999	286	44.7	489	76.4	595	93	-	-	-	-
2000	204	43.5	377	80.4	-	-	-	-	-	-
2001	172	35.5	-	-	-	-	-	-	-	-
Average	-	46.0	-	79.9	-	93.2	-	97.6	-	98.9

Figure 2

Time-line for UNDE Students to Declare a Major



III. Academic Units Where the UNDE Students Eventually Graduated From

Regarding majors that UNDE students finally chose, CAS and SOM seemed to be the two most wanted, as revealed by Table 2. It is worth noticing the trends that the number of UNDE students graduated from CAS has been decreasing, while SOM seemed to graduate more. For example, for the 1992 cohort, about 74% of the graduated received their degrees in CAS in comparisons with the 1996 cohort, when the number went down to 64%. In comparison, SOM saw about a 10% increase during the same period of time. Table 3 is included for a convenient reference check regarding student major distributions in different schools and colleges. Table 4 lists departments within each academic unit that granted the degrees.

Table 2. Students with Undeclared Major Upon Matriculation Who Eventually Graduated

	Cohort									
	1992		1993		1994		1995		1996	
	N	%	N	%	N	%	N	%	N	%
College of Arts and Sciences	244	73.9	249	69.4	237	62.9	194	63.6	183	63.8
School of Management	50	15.2	69	19.2	85	22.5	78	25.6	76	26.5
Graduate School of Education	17	5.2	15	4.2	16	4.2	6	2.0	12	4.2
School of Info Technology and Engineering	9	2.7	12	3.3	17	4.5	12	3.9	10	3.5
College of Visual and Performing Arts	8	2.4	9	2.5	16	4.2	12	3.9	3	1.0
College of Nursing and Health Science	2	0.6	5	1.4	6	1.6	3	1.0	3	1.0
Total Initially Undeclared Graduated	330	100.0	359	100.0	377	99.9	305	100.0	287	100.0

Table 3. Summary of Cohort Enrollment by School/Colleges

	CAS		CVPA		GSE		NURS		PROV*		SITE		SOM		Univ Total
	N	%	N	%	N	%	N	%	N	%	N	%	N	%	
1992	542	31.3	53	3.1	19	1.1	51	2.9	573	33.0	178	10.3	318	18.3	1,734
1993	494	29.5	60	3.6	24	1.4	36	2.2	671	40.1	136	8.1	251	15.0	1,672
1994	504	29.1	49	2.8	31	1.8	57	3.3	691	40.0	126	7.3	271	15.7	1,729
1995	716	38.6	66	3.6	23	1.2	52	2.8	614	33.1	136	7.3	247	13.3	1,854
1996	744	39.6	63	3.4	18	1.0	43	2.3	615	32.8	144	7.7	250	13.3	1,877
1997	748	38.6	90	4.6	22	1.1	52	2.7	558	28.8	176	9.1	290	15.0	1,936
1998	705	34.8	74	3.7	27	1.3	45	2.2	619	30.6	246	12.2	308	15.2	2,024
1999	620	30.5	89	4.4	17	0.8	66	3.2	640	31.4	294	14.4	309	15.2	2,035
2000	625	29.8	126	6.0	34	1.6	76	3.6	469	22.3	424	20.2	345	16.4	2,099
2001	573	27.6	128	6.2	44	2.1	81	3.9	485	23.4	410	19.8	353	17.0	2,074
2002	640	29.6	101	4.7	49	2.3	63	2.9	758	35.1	281	13.0	268	12.4	2,160

* Undeclared (UNDE) students are classified under the Provost's Office.

Note: Considering about 30-40% of the regular students are enrolled in CAS, UNDE students tend to favor CAS more than their peers. With CAS, PUA, PSYC, COMM & ENGL are the most popular departments within CAS.

Table 4. List of Departments that Granted the UNDE Students Their Degrees

		Cohort				
		1992	1993	1994	1995	1996
College of Arts and Sciences	BAIS	-	-	2	1	2
	BIOL	17	28	22	19	13
	CHEM	6	-	-	-	-
	COMM	30	40	33	42	47
	ECON	9	5	7	5	5
	ENGL	39	39	33	15	18
	EVPP	1	-	-	1	-
	FL&L	4	1	5	2	7
	GESS	2	5	2	3	1
	HAAH	14	11	17	7	8
	INDV	-	1	-	-	-
	MATH	4	1	-	1	-
	NCC	-	3	2	1	6
	PHRS	1	2	5	-	-
	PHYS	1	-	2	1	-
	PSYC	47	51	45	52	33
	PUAF	57	40	44	31	27
	RUST	-	1	2	-	-
	SOAN	7	15	11	12	14
	SOCW	4	4	4	1	2
STAM	1	2	1	-	-	
Unit Total		244	249	235	193	181
College of Visual and Performing Arts	AVT	4	7	11	9	1
	DANC	-	1	-	2	-
	MUSI	2	1	4	-	-
	THR	2	-	1	1	2
Unit Total		8	9	16	12	3
Graduate School of Education	HFRR	17	15	16	6	12
College of Nursing and Health Science	NURS	2	5	6	3	3
School of Info Technology and Engineering	CEIE	5	4	5	-	1
	CS	3	4	7	7	7
	ECE	1	4	1	2	1
	SYST	-	-	4	3	1
Unit Total		28	32	39	21	25
School of Management	SOM	50	69	85	78	76
University Total		330	359	377	305	287