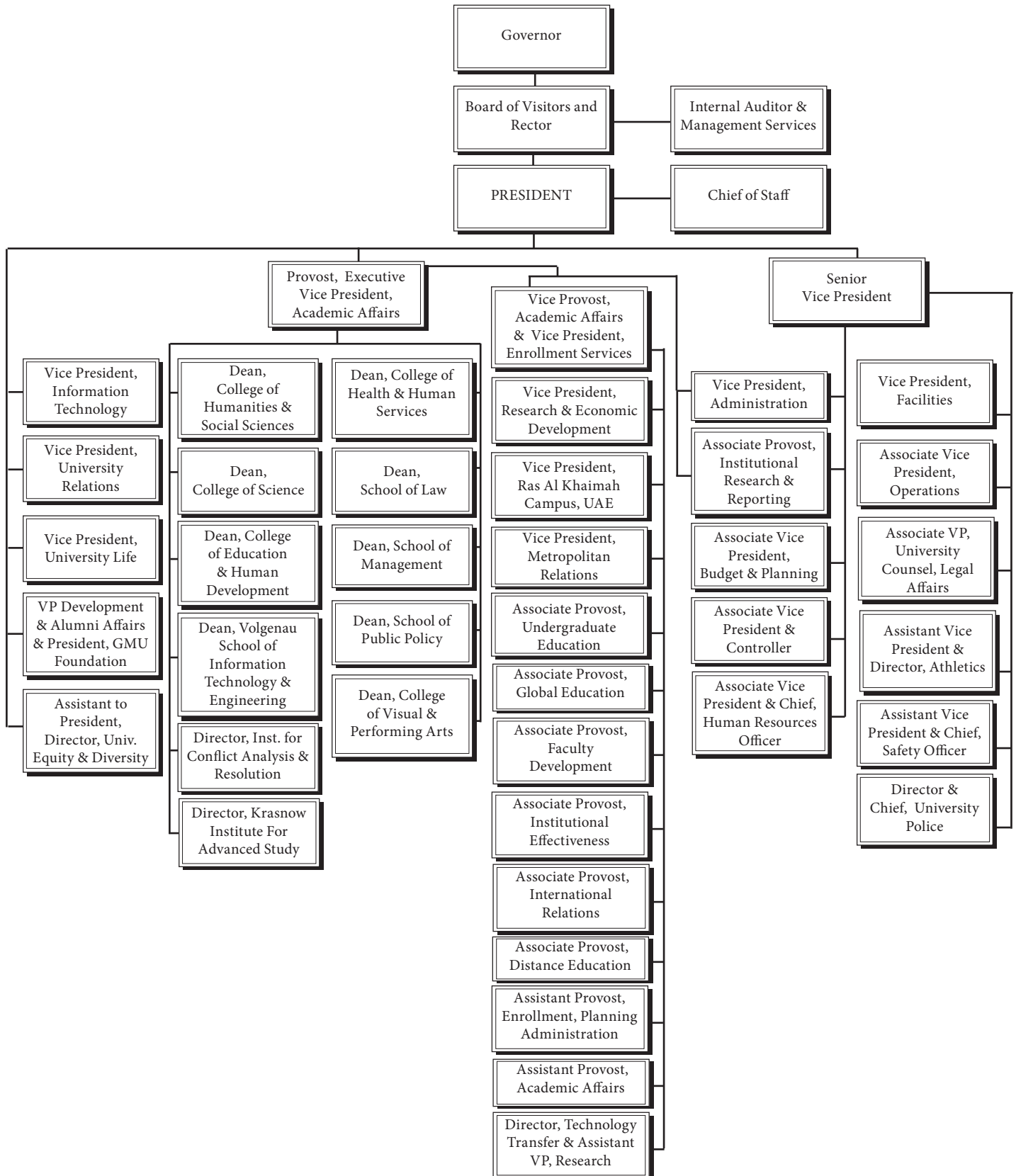


ADMINISTRATION

ADMINISTRATION ORGANIZATIONAL CHART AS OF SEPTEMBER 2008



STATE COUNCIL OF HIGHER EDUCATION FOR VIRGINIA

Established in 1956 by the General Assembly and the Governor, the State Council of Higher Education for Virginia (SCHEV) is the Commonwealth's coordinating body for higher education. SCHEV's mission statement is as follows:

“To promote the development and operation of an educationally and economically sound, vigorous, progressive, and coordinated system of higher education.”

By statute, the Council makes policy recommendations to the Governor and General Assembly affecting Virginia's outstanding system of higher education in such areas as budget planning, enrollment projections, institutional technology needs, and student financial aid, among others. The Council also implements a wide variety of higher education programs which benefit students, faculty, parents, and taxpayers. SCHEV serves as a catalyst to promote greater access, quality, affordability, and accountability throughout the system. SCHEV also helps policymakers, college administrators, and other concerned leaders work cooperatively and constructively to advance educational excellence. The Council consists of 10 members who are appointed by the Governor to four-year terms. As of November 2008, the members and officers of SCHEV are:

CHAIR:

The Honorable Whittington W. Clement
Richmond, VA
Appointed: July 1, 2005
Current Term Expires: June 30, 2009

Dr. B.R. “Bob” Ashby
Danville, VA
Appointed: July 1, 2006
Current Term Expires: June 30, 2010

Mr. Gilbert T. Bland
Virginia Beach, VA
Appointed: July 1, 2007
Re-appointed: July 1, 2008
Current Term Expires: June 30, 2012

The Honorable James W. Dyke, Jr.
Richmond, VA
Appointed: April 1, 2004
Re-appointed: July 1, 2008
Current Term Expires: June 30, 2012

Dr. Mimi M. Elrod
Lexington, VA
Appointed: July 1, 2003
Re-appointed: July 1, 2007
Current Term Expires: June 30, 2011

The Honorable Eva S. Hardy
Vice-Chairman
Richmond, VA
Appointed: July 1, 2005
Current Term Expires: June 30, 2009

Ms. Margaret G. Lewis
Richmond, VA
Appointed: October 14, 2004
Re-appointed: July 1, 2005
Current Term Expires: June 30, 2009

Ms. Susan A. Magill
Alexandria, VA
Appointed: July 1, 2006
Re-appointed: July 1, 2008
Current Term Expires: June 30, 2012

Ms. Christine T. Milliken
Arlington, VA
Appointed: July 1, 2002
Re-appointed: July 1, 2006
Current Term Expires: June 30, 2010

Mr. Alan L. Wurtzel
Delaplane, VA
Appointed: July 1, 2003
Re-appointed: July 1, 2007
Current Term Expires: June 30, 2011

BOARD OF VISITORS

The Board of Visitors (BOV) of George Mason University was created by an act of the General Assembly when the university became an independent institution. The act that established the BOV became effective April 7, 1972. The BOV is a corporate body serving under the leadership of a rector and a vice rector. The 16 members of the Board are appointed by the Governor of Virginia on a rotating basis to serve four-year terms. The Chair of the Faculty Senate serves as the faculty representative on the Board. Two student representatives are appointed by the Board each year at the May meeting to serve a one-year term. Further information can be found at <http://bov.gmu.edu>. The 2008-2009 members of the BOV are:

RECTOR:

Mr. Ernst Volgenau
Chairman
SRA International, Inc.
McLean, VA

VICE RECTOR:

Mr. John Knox Singleton
President and CEO
Inova Health System
Oakton, VA

SECRETARY:

Mr. William Soza
McLean, VA

Ms. Anne K. Altman
General Manager for Mainframe Platform
IBM Fairfax
Oakton, VA

Mr. Byron F. Marchant
President and CEO
United States Naval Academy Alumni Association
and Foundation
Arlington, VA

Ms. Terri Cofer Beirne
Eastern Counsel
Wine Institute
Midlothian, Virginia

Mr. Charlie "Chuck" H. Mills, III
CEO of Salera Capital
Sterling, VA

Mr. Vincent F. Callahan
Former President of Callahan Publication and
Former Virginia Delegate
McLean, VA

Dr. Long V. Nguyen
CEO/Chairman
Pragmatics, Inc.
McLean, VA

Ms. Kathleen M. deLaski
Walton Family Foundation

Mr. Sudhakar Shenoy
Chairman
Information Management Consultants, Inc.
Great Falls, VA

Mr. C. Gibson Dunn
Consultant
Great Falls, VA

Ms. D. Jean Wu
The Tilden Group
Arlington, VA

Mr. Denny Garcia
Consultant
Alexandria, VA

Ms. Diedra Bailey
(Student Representative)
Fairfax, VA

Ms. Lovey L. Hammel
President of Employment Enterprises, Inc.
Fairfax, VA

Ms. Aline Sandouk
(Student Representative)
Fairfax, VA

Mr. Glenn C. Lewis
Chairman
The Lewis Law Firm, P.C.
Fairfax, VA

UNIVERSITY ADMINISTRATION
PRESIDENT'S OFFICE

President	Alan G. Merten
Vice President, University Relations	Christine LaPaille
Vice President, University Life	Sandra Hubler
Vice President and CIO, Information Technology	Joy R. Hughes
Vice President, University Development and Alumni Affairs	Marc Broderick
Chief of Staff	J. Thomas Hennessey, Jr.
Assistant to the President and Director, University Equity and Diversity	Corey D. Jackson

UNIVERSITY PROVOST

Provost and Executive Vice President, Academic Affairs	Peter N. Stearns
Vice Provost, Academic Affairs and Vice President, Enrollment Services	Linda A. Schwartzstein
Vice President, Research and Economic Development	Roger Stough
Vice President, Metropolitan Relations	Stanley E. Taylor
Interim Vice President, Ras Al Khaimah Campus, U.A.E.	Zaid Ansari
Associate Provost, Undergraduate Education	Richard Davis
Associate Provost, Distance Education	Goodlett McDaniel
Associate Provost, Faculty Development and Director, Center for Teaching Excellence	Kimberly Eby
Associate Provost, Institutional Effectiveness	Karen M. Gentemann
Associate Provost, Institutional Research and Reporting	Kris M. Smith
Associate Provost, International Relations	Sharon Siverts
Assistant Provost, Enrollment Planning and Administration	Renate Guilford
Assistant Provost, Academic Affairs	Wendy Payton
Director/Associate Provost, Global Education	Yehuda Lukacs

SENIOR VICE PRESIDENT

Senior Vice President	Maurice W. Scherrens
Vice President, Administration	Lawrence D. Czarda
Vice President, Facilities	Thomas G. Calhoun
Associate Vice President, University Counsel, Legal Affairs	Thomas M. Moncure, Jr.
Associate Vice President, Budget and Planning	Donna Kidd
Associate Vice President and Controller	Elizabeth A. Brock
Associate Vice President and Chief Human Resources Officer	Linda H. Harber
Associate Vice President, University Services	Mark Kraner
Associate Provost, Institutional Research and Reporting	Kris M. Smith
Assistant Vice President and Chief Safety Officer	Keith R. Bushey
Assistant Vice President and Director of Athletics	Thomas J. O'Connor
Director and Chief of University Police	Michael F. Lynch

DEANS AND DIRECTORS, CHAIRS

COLLEGE OF EDUCATION AND HUMAN DEVELOPMENT

Dean	Jeffrey Gorrell
Senior Associate Dean	Martin E. Ford
Associate Dean, Academic and Student Affairs	Ellen D. Rodgers
Associate Dean, Outreach and Professional Development/Office of Education Services	Joan P. Isenberg
Associate Dean, Office of Research	Peter Barcher
Director, School of Recreation, Health and Tourism	David Wiggins
Director, Division of Undergraduate Studies in Education	Jeannine Tate

COLLEGE OF HEALTH AND HUMAN SERVICES

Dean	Shirley Travis
Associate Dean, Academic Affairs	Frank Whittington
Associate Dean, Business Development	J. Goodlett McDaniel
Associate Dean, Research	Keith Howell
Assistant Dean, Student Affairs and Enrollment Management	Susan Swett
<i>School of Nursing:</i>	
Director, School of Nursing and Associate Dean, CHHS	Robin Rensburg
Assistant Dean, Undergraduate Division	Carol Q. Urban
Assistant Dean, Master's/Post Master's Division	Joyce A. Hahn
Assistant Dean, Doctoral Studies Division	James Vail (Interim)
Assistant Dean, Nursing Research Development	Jean B. Moore
<i>Department Chairs:</i>	
Global and Community Health	Lisa Pawloski
Health Administration and Policy	P.J. Maddox
Social Work	Miriam Raskin (Interim)

COLLEGE OF HUMANITIES AND SOCIAL SCIENCES

Dean	Jack R. Censer
Senior Associate Dean	Dee Ann Holisky
Associate Dean, Undergraduate Academic Affairs	Doris Bilter
Associate Dean, Graduate Programs and Services	Jamie S. Cooper
Associate Dean, Research	Matthew Zingraff
Associate Dean, New Century College	Nance Lucas
Deputy Associate Dean, Undergraduate Academic Affairs	Vacant
Assistant Dean, Undergraduate Academic Programs	Evan Baum
<i>Department Chairs:</i>	
Administration of Justice	Stephen Mastrofski
Communication	Gary L. Kreps
Economics	Donald J. Boudreaux
English	Robert Matz
History and Art History	Brian Platt
Modern and Classical Languages	Julie A. Christensen
Philosophy	Ted Kinnaman
Psychology	Deborah Boehm-Davis
Public and International Affairs	Robert L. Dudley
Religious Studies	Young-Chan Ro
Sociology and Anthropology	Susan Trencher

COLLEGE OF SCIENCE

Dean	Vikas Chandhoke
Senior Associate Dean, Finance and Personnel	Evans J. Mandes
Senior Associate Dean, Academic Programs	Maria Dworzecka
Associate Dean, Graduate Programs	Peter A. Becker
Associate Dean, Undergraduate Programs	Richard J. Diecchio
Associate Dean, Research and Computing	Paul S. Schopf
Assistant Dean, Development and External Relations	Tere Linehan
Director, Information Technology and Computing	Stanley Zoltek
<i>Department Chairs:</i>	
Bioinformatics and Computational Biology	Saleet Jafri
Chemistry and Biochemistry	Gregory D. Foster
Atmospheric, Oceanic, and Earth Sciences	Jagadish Shukla
Computational and Data Sciences	Dimitrios Papaconstantopoulos
Environmental Science and Policy	Robert Jonas
Geography and Geoinformation Sciences	Peggy Agouns
Mathematical Sciences	Klaus G. Fischer
Molecular and Microbiology	James D. Willett
Physics and Astronomy	Robert Ehrlich

COLLEGE OF VISUAL AND PERFORMING ARTS

Dean	William F. Reeder
Senior Associate Dean	Linda G. Miller
Associate Dean, Development and Alumni Affairs	Brian H. Marcus
Assistant Dean, Technology, Research and Advancement	Scott Martin
Director, Finance and Administration/CFO	Andrew M. Bursten
Director, Graduate Studies and Academic Advancement	Victoria N. Salmon
Artistic Director, Center for the Arts	Rick Davis
<i>Department Chairs:</i>	
Art and Visual Technology	Harold Linton
Arts Management	Richard P. Kamenitzer
Dance	Elizabeth C. Price
Film and Video Studies	Cindy Lont
Music	James E. Gardner
Theater	Clayton Austin

SCHOOL OF LAW

Dean	Daniel D. Polsby
Associate Dean, Academic Affairs	Craig Lerner
Associate Dean/Director – Law and Economic Center	Francis H. Buckley
Associate Dean, Library and Technology	Deborah M. Keene
Associate Dean, Career, Academics, and Alumni Services	Victoria M. Huber
Associate Dean, Management and Finance	Vacant
Senior Assistant Dean, Director of Admissions	Alison Price
Assistant Dean, Academic Administration	Annamaria Nields
Assistant Dean, Student Records	Patricia J. Hupalo
Director, Student Academic Affairs	Christine Malone

SCHOOL OF MANAGEMENT

Dean	Richard J. Klimoski
Senior Associate Dean	David Harr
Associate Dean, Undergraduate Programs	Alison O'Brien
Associate Dean, Executive Programs and Director of EMBA	Roy W. Hinton
Assistant Dean, Academic and Career Services	Pamela Allen
<i>Business Discipline Chairs:</i>	
Accounting	Anne Magro
Finance	Gerald Hanweck
Information Systems and Operations Management	Amitava Datta
Management	David Kravitz
Marketing	James Harvey

SCHOOL OF PUBLIC POLICY

Dean	Kingsley E. Haynes
Vice Dean	James H. Finkelstein
Assistant Dean, Human Resources and Planning	William H. Coester
Assistant Dean, Research Administration and Outreach	Keith B. Segerson
Assistant Dean, Graduate Admissions and Marketing	Leslie Metzger Levin
Assistant Dean, Student Services	Jill V. Emerson
Acting Assistant Dean, Program Management	Elizabeth C. Eck
Associate Dean, Academic Affairs	Matthys K. van Schaik
Associate Dean, Research	Jonathan L. Gifford

THE VOLGENAU SCHOOL OF INFORMATION TECHNOLOGY AND ENGINEERING

Dean	Lloyd J. Griffiths
Associate Dean, Research and Graduate Studies	Daniel Menasce
Associate Dean, Undergraduate Studies	E. Bernard White
Assistant Dean, Academic Affairs	Sharon A. Caraballo
<i>Department Chairs:</i>	
Applied Information Technology	Donald T. Gantz
Civil, Environmental, and Infrastructure Engineering	Michael Bronzini
Computer Science	Hassan Gomaa
Electrical and Computer Engineering	Andre Manitiu
Statistics	William F. Rosenberger
Systems Engineering and Operations Research	Ariela Sofer

INSTITUTE FOR CONFLICT ANALYSIS AND RESOLUTION

Director	Sara Cobb
Associate Director	Juliette Shedd

KRASNOW INSTITUTE FOR ADVANCED STUDY

Director	James L. Olds
Associate Director	Kenneth A. De Jong

ENDOWED CHAIRS

Andrea Bartoli
Drucie French Cumbie Professor of Conflict Analysis
and Resolution

Michael Behrmann
Helen A. Kellar Professor of Special Education

James T. Bennett
William P. Snaveley Professor of Political Economy and
Public Policy

Michael Bronzini
Sidney O. Dewberry Chair for Civil, Environmental,
and Infrastructure Engineering

Francis H. Buckley
Mason Foundation Professor of Law

Sandra Cheldelin
Vernon M. and Minnie I. Lynch Professor of
Conflict Analysis and Resolution

Gerald Cook
Earle C. Williams Professor of Information Technology
and Electrical Engineering

Tyler Cowen
Holbert L. Harris Chair in Economics

Amitava Dutta
LeRoy Eakin Senior, Professor of E-commerce

Michael G. Ferri
Mason Foundation Professor of Finance

Stephen F. Fuller
Dwight C. Schar Faculty Chair in School of Public
Policy and University Professor

Jack A. Goldstone
Virginia E. and John T. Hazel, Jr. Endowed Chair

Marc Gopin
James H. Laue Chair in World Religions, Diplomacy,
and Conflict Resolution

Kingsley E. Haynes
Ruth D. Hazel and John T. Hazel, M.D. Faculty Chair
in School of Public Policy

Laurence R. Iannaccone
David H. Koch and Charles G. Koch Professor of
International Economics

Sushil Jajodia
BDM International Professor of Information
Technology and University Professor

Gary Kreps
Eileen and Steve Mandell Term Professor of Health
Communication

Nelson R. Lund
Patrick Henry Professor of Constitutional Law and the
Second Amendment

Carol C. Mattusch
Mathy Professor of Art History

Timothy J. Muris
Mason Foundation Professor of Law

Eric Pankey
Heritage Chair in Writing

Daniel Polsby
Mason Foundation Professor of Law

William Reeder
Heritage Chair in Arts and Cultural Criticism

Dennis J. Ritchie
Elisabeth Shirley Enochs Chair in Child Welfare

Nadim Rouhana
Henry Hart Rice Chair of Conflict Analysis and
Resolution

Charles K. Rowley
Duncan Black Professor of Economics

Andrew P. Sage
First American Bank of Virginia Professor of
Information Technology and University Professor

Roger R. Stough
Northern Virginia Chair in Local Government

Richard E. Wagner
Holbert L. Harris Chair in Economics

Edward J. Wegman
Bernard J. Dunn Professor of Information Technology
and Applied Statistics

ENDOWED CHAIRS (CONTINUED)

Walter E. Williams
John M. Olin Distinguished Professor of Economics

Vacant
Drucie French Cumbie Professor of Conflict
Resolution

Vacant
Heritage Chair in Music

Vacant
Omer L. and Nancy Hirst Professor of Public Policy

Vacant
Mark and Barbara Fried Chair

Vacant
Mason Foundation Professor of Accounting

Vacant
Mason Foundation Professor of Management

Vacant
Mason Foundation Professor of Marketing

Vacant
Planning Research Corporation Professor of
Information Technology and Computer Science

Vacant
Mason Professor of Law

EMERITUS FACULTY

Victorio G. Aguera
Professor Emeritus of Spanish

Rita Ailinger
Professor Emerita of Nursing

Vassily P. Aksyonov
Professor Emeritus of Russian Literature and Writing

John Allen
Associate Professor Emeritus of Psychology

Robert A. Anthony
George Mason University Foundation Professor of
Law, Emeritus

Ralph Balint
Professor Emeritus of Psychology

Anna Baraniecki
Professor Emerita of Electrical and Computer
Engineering

Ralph Barocas
Professor Emeritus of Psychology

Richard Baum
Professor Emeritus of Information and Software
Engineering

Mary Catherine Bateson
Professor Emerita of Anthropology and English

Guy Beale
Professor Emeritus of Electrical and Computer
Engineering

Barry K. Beyer
Professor Emeritus of Education

Ted Bradley
Associate Professor Emeritus of Environmental
Science and Policy

Peter Black
Professor Emeritus of Anthropology

W. Murray Black
Professor Emeritus of Electrical and Computer
Engineering

John Blaha
Associate Professor Emeritus of Psychology

A. Richard Bolstein
Associate Professor Emeritus of Statistics

C. Alan Boneau
Professor Emeritus of Psychology

John Bonfadini
Associate Professor Emeritus of Education

Thomasina Borkman
Professor Emerita of Sociology

EMERITUS FACULTY (*CONTINUED*)

Beverly Boyd

Assistant Professor Emerita of Nursing

Rose Brenkus

Assistant Dean Emerita of Nursing

Marjory Brown Azarowicz

Professor Emerita of Education

Brack Brown

Professor Emeritus of Public and International Affairs

Stephen J. Brown

Professor Emeritus of English

James M. Buchanan

Distinguished Professor Emeritus of Economics

Mary Kay Cabell

Associate Professor Emerita of Mathematical Sciences

Le Cao

Associate Professor Emerita of Accounting

Rita Carty

Dean Emerita, College of Nursing and Health Science

Ernest Cassara

Professor Emeritus of History

Peter Ceperley

Professor Emeritus of Physics

Arthur H. Chickering

Professor Emeritus of Education

Jae W. Chung

Professor Emeritus of Economics

Robert Clark

Professor Emeritus of Public and International Affairs

Martin Cohen

Assistant Professor Emeritus of History and Art
History

Virginia Collier

Professor Emerita of Education

John Henry Cooper

Chair Emeritus of Health, Sport, and Leisure Studies

Anne Cordero

Associate Professor Emerita of French

Lloyd M. DeBoer

Dean Emeritus of School of Business Administration

Edward Clark Dobson

Associate Professor Emeritus of Education

Jean-Paul Dumon

Clarence J. Robinson Professor Emeritus

Dennis Dunklee

Associate Professor Emeritus of Educational
Leadership

Stephen T. Early

Professor Emeritus of Government and Politics

Albert W. Edgemon

Professor Emeritus of Education

Esther Elstun

Professor Emerita of German

Michael G. Emsley

Professor Emeritus of Biology

Carol Erdwins

Associate Professor Emerita of Psychology

Carl Ernst

Professor Emeritus of Environmental Science and
Policy

John Evans

Professor Emeritus of Physics

Edwin A. Fleishman

Professor Emeritus of Psychology

James Fletcher

Associate Professor Emeritus of Philosophy

Martha P. Francescato

Professor Emerita of Spanish

Colonel Arnald D. Gabriel

Professor Emeritus of Music

Helen S. Garson

Professor Emerita of English

EMERITUS FACULTY (*CONTINUED*)

Theodore Gessner
Associate Professor Emeritus of Psychology

Martha M. Giles
Associate Professor Emerita of Music

Robert L. Gilstrap
Professor Emeritus of Education

Barbara Given
Associate Professor Emerita of Education

James Godfrey
Professor Emeritus of Accounting

Louis Golomb
Associate Professor Emeritus of Anthropology

Thomas Goodale
Professor Emeritus of Health, Fitness, and Recreation
Resources

Harold Gortner
Professor Emeritus of Public and International Affairs

Vernon Gras
Professor Emeritus of English

Thomas Gullede
Professor Emeritus in Public Policy

Henry Hamburger
Professor Emeritus of Computer Science

Joseph Harsh
Associate Professor Emeritus of History

Jayne Hart
Professor Emerita of Biology

Nand Hart Nibbrig
Associate Professor Emeritus of Government and
Politics

Robert R. Hawkes
Assistant Professor Emeritus of History/Dean
Emeritus, School of Continuing and Alternative
Learning

Leo Hecht
Professor Emeritus of Russian

Kenneth Heller

Professor Emeritus of Accounting
Peter Henriques
Associate Professor Emeritus of History

Thomas H. Hill
Professor Emeritus of Music

Robert Holt
Associate Professor Emeritus of Psychology

Lois Horton
Professor Emerita of History

Lorna Irvine
Professor Emerita of English

Jenefir Isbister
Professor Emerita of Molecular and Microbiology

James L. Jackson
Professor Emeritus of English

Evelyn Jacob
Professor Emerita of Education

Helen Jenkins
Professor Emerita of Nursing

Ronald Jensen
Associate Professor Emeritus of History

George W. Johnson
President Emeritus, Professor Emeritus of English

Hazel W. Johnson-Brown
Professor Emerita of Nursing

Don E. Kash
Professor Emeritus of Public Policy

Joseph Kanyan
Associate Professor Emeritus of Music

Irving Kayton
Professor Emeritus of Law

Donald P. Kelso
Associate Professor Emeritus of Environmental
Science and Policy

Jerome Kernan
Professor Emeritus of Behavioral Analysis

Emelia-Louise Kilby
Professor Emerita of Health and Physical Education

EMERITUS FACULTY (*CONTINUED*)

Barbara Knight
Associate Professor Emerita of Public and International Affairs

Thelma Z. Lavine
Professor Emerita of Philosophy and American Culture

Christena Langley
Associate Professor Emerita of Nursing

Elyse Lehman
Professor Emerita of Psychology

Raymond G. LePage
Associate Professor Emeritus of French

Jack Levy
Professor Emeritus of Education

Sara Looney
Associate Professor Emerita of Communication

William Martin
Professor Emeritus of Education

Catherine Malloy
Professor Emerita of Health, Fitness, and Recreation Resources

Bruce Manchester
Professor Emeritus of Communication

Henry G. Manne
Dean Emeritus, School of Law

Michael J. McDermott, Jr.
Associate Professor Emeritus of Philosophy and Religion and Registrar Emeritus

William H. McFarlane
Professor Emeritus of Philosophy

Gustavo Mellander
Dean Emeritus of the College of Education and Human Development

Barbara Melosh
Professor Emerita of English

Henry P. Meyer
Associate Professor Emeritus of French

Eugenie V. Mielczarek
Professor Emerita of Physics

Christopher Mitchell
Professor Emeritus of Conflict Analysis and Resolution

Winston Moore
Associate Dean Emeritus

Mary S. Montebello
Professor Emerita of Education

Walter Moretz
Associate Professor Emeritus of Psychology

Colin Owens
Professor Emeritus of English

Josephine F. Pacheco
Professor Emerita of History

James D. Palmer
Professor Emeritus of Information Technology and Engineering

Anthony F. Palmieri
Associate Professor Emeritus of English

Samuel H. Phillips Jr.
Professor Emeritus of Economics

Conrad Philos
Professor Emeritus of Law

John Radner
Associate Professor Emeritus of English

Coleman Raphael
Dean Emeritus, School of Business Administration

Georgine Redmond
Associate Professor Emerita of Nursing

David C. Rine
Professor Emeritus of Computer Science

Robert Rugel
Associate Professor Emeritus of Psychology

Robert Ruhling
Professor Emeritus of Physical Education

Mian M. Saeed
Professor Emeritus of History

EMERITUS FACULTY (*CONTINUED*)

Andrew P. Sage
 Founding Dean Emeritus,
 The Volgenau School of Information Technology and
 Engineering

Ben F. Sands, Jr.
 Associate Professor Emeritus of Management

David H. Schaefer
 Associate Professor Emeritus of Electrical and
 Computer Engineering

Betty J. Schuchman
 Associate Professor Emerita of Education

Carol J. Sears
 Associate Professor Emerita of Education

Jay Shaffer
 Professor Emeritus of Biology

Mary Silva
 Professor Emerita of Nursing

Judith Skog
 Professor Emerita of Environmental Science and
 Policy

James G. Smith
 Professor Emeritus of Music

Kitty Parker Smith
 Associate Professor Emerita of Nursing and Health
 Science

Vernon Smith
 University Professor Emeritus of Economics

William P. Snavelly
 Professor Emeritus of Economics

John P. Soder
 Associate Professor Emeritus of History

Mark Spikell
 Professor Emeritus of Education

Frank Spindler
 Professor Emeritus of History

Melissa Stanley
 Professor Emerita of Biology

Eileen Sypher
 Professor Emerita of English

Daniel Tabak
 Professor Emeritus of Information Technology and
 Electrical Engineering

Stephan R. Taub
 Professor Emeritus of Biology

Nicholas Tavani
 Associate Professor Emeritus of Sociology and
 Anthropology

Anita Taylor
 Professor Emerita of Communication

Wayne Thomas
 Professor Emeritus of Education

Hale Tongren
 Professor Emeritus of Marketing

Zita Tyer
 Professor Emerita of Psychology

James Vail
 Associate Professor Emeritus of Nursing

Harry Van Trees
 University Professor Emeritus

Karen Vaughn
 Professor Emerita of Economics

Irmgard Wagner
 Professor Emerita of German

Gerald Wallace
 Professor Emeritus of Education

Dorothy J. Walker
 Professor Emerita of Nursing

C. Robert Walter, Jr.
 Professor Emeritus of Chemistry

John N. Warfield
 Professor Emeritus of Public Policy and Integrative
 Studies

Keith Q. Warner
 Professor Emeritus of French

EMERITUS FACULTY (CONTINUED)

Inge Wekerle

Assistant Professor Emerita of German

Louise White

Professor Emerita of Public and International Affairs

William Scott Willis

Professor Emeritus of French

CLARENCE J. ROBINSON PROFESSORS

Shaul Bakhash

History

Spencer Crew

History and Art History

Paul D'Andrea

Theater and English

Robert M. Hazen

Earth Sciences

Hugh Hecló

Public Affairs

UNIVERSITY PROFESSORS

Zoltan J. Acs

Public Policy

Deborah Boehm Davis

Psychology

Peter Boettke

Economics

Kenneth J. Button

Public Policy

Alan Cheuse

English

Timothy Conlan

Public and International Affairs

Susanne Denham

Psychology

John Foster

English

Norman A. Yance

Associate Professor Emeritus of Religious Studies

George A. Zaphiriou

Professor Emeritus of Law

Carma Hinton

Visual Culture and Chinese Studies

Harold J. Morowitz

Biology and Natural Philosophy

John N. Paden

International Affairs and Public Policy

James S. Trefil

Physics

Stephen F. Fuller

Public Policy

James E. Gentle

Computational Statistics

Naomi L. Gerber

Health and Human Services

Sushil Jajodia

Information Technology and Engineering

Alexander H. Levis

Electrical and Computer Engineering

Lance Liotta

Molecular and Microbiology

Anthony Maiello

Music

Margo Mastropieri

Education and Human Development

UNIVERSITY PROFESSORS (*CONTINUED*)

Patricia Miller
Music

James L. Olds
Computational Neuroscience

Raja Parasuraman
Psychology

James P. Pfiffner
Public Policy

Richard Rubenstein
Conflict Analysis and Resolution

Andrew P. Sage
Information Technology and Engineering

Thomas Scruggs
Education and Human Development

Martin Sherwin
History and Art History

Jagdish Shukla
Climate Dynamics

Edgar H. Sibley
Information Systems and Systems Engineering

Valery N. Soyfer
Molecular and Microbiology

June Tangney
Psychology

Susan Tolchin
Public Policy

Rex Wade
History and Art History

DISTINGUISHED PROFESSORS

Michael R. Kelley
School of Public Policy

Stuart Malawer
School of Public Policy

David Lee Weisburd
Administration of Justice